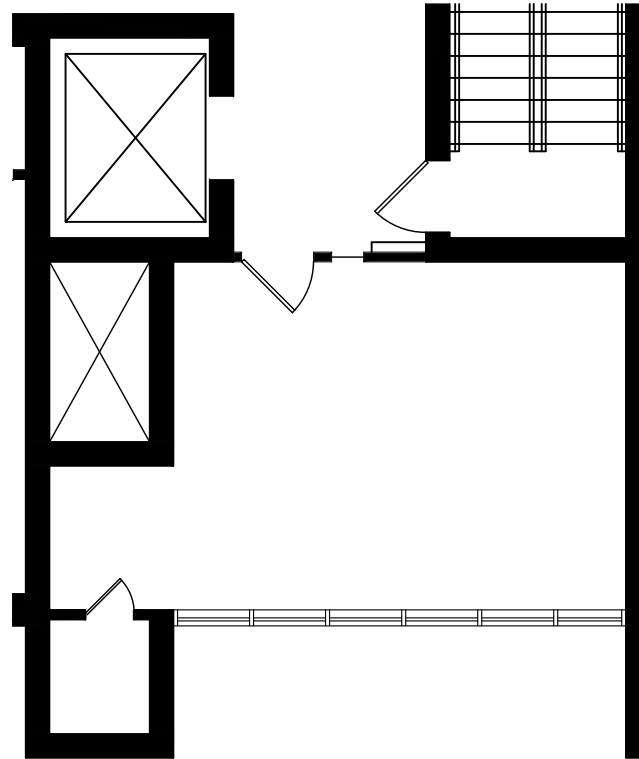


BOULEVARD 25 - 1805 South Bellaire Street

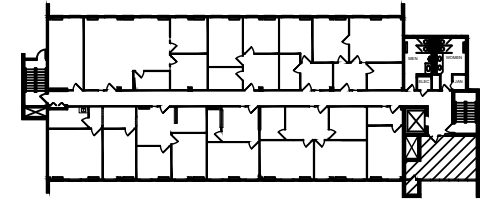
Scale: 1/8" = 1'-0"

Level 2 

February 2, 2024



SUITE 200 413 SF



KEY PLAN

boulevard **25**



MATRIX
GROUP, INC.

Lauren Quiram, Director of Leasing
lquiram@matrixgroupinc.com
(303) 300-5271